

**NOTE TO TRUSS MANUFACTURE:**

2019.11.27 - Manufactured Items and Materials

All materials like a truss, floor joist, beams, etc. **CAN NOT** be designed, put into production or purchased for installation based upon these drawings alone.

**ALL** dimensions need to be verified during construction and before the material is purchased, ordered or put into production. The manufacture, like the truss manufacturer, builder, contract or framer **MUST**

**MUST**

review all relevant dimensions and inform Virtual Creations and the manufacture of any discrepancies. At the minimum the client must at least contact Virtual Creation to review the as built condition before purchasing, ordering or putting into production any and all materials.

**FAILURE** to verify these dimensions will absolve Virtual Creations of any responsibility of errors or discrepancies in our plans. By paying this invoice you agree to this requirement and condition.

**DIMENSION NOTE:**

2019.12.05 - There are different ways of dimension architectural floors, what follows is an explanation of the why interior walls are dimensioned as 4" or 6" vs other methods.

Some Architectural drawings chose to dimension the rough wood stud framing. However this would create a lot fractioned dimensions on the plans and would require the framer to account for the 1/2" drywall material in some conditions like bathroom tubs and stair wells.

Some Architectural drawings chose to dimension the finished wall thickness. However this would create a lot fractioned dimensions as well.

These Architectural set of drawings chose to dimension interior walls to a round 4" or 6" dimension. We feel this is the cleanest dimension as they do not have fractions, and at most produce a 1/4" error which isn't typically an issue. Further we full appreciate that we can not ask trades in the field to measure to 1/4" accuracies nor to we assume that as built construction could hold those tolerances.

**Part 4 Loads used**

- 20lb Dead Load
- 40lb Live Load (interior)
- 50lb Live Load (exterior)
- 32lb Snow Load
- 10lb Wind Load

**Deflection limits**

- L/425 Floors (interior)
- L/360 Floors (exterior)

**Commitment to General Review**

Yes

No

**Electrical Safety Authority**

Doing electrical work? A notification must be filed with the Electrical Safety Authority. Hiring someone to do electrical contractor.

It's the law.

For more information go to [www.esasafe.com](http://www.esasafe.com) or call 1-877-372-7233



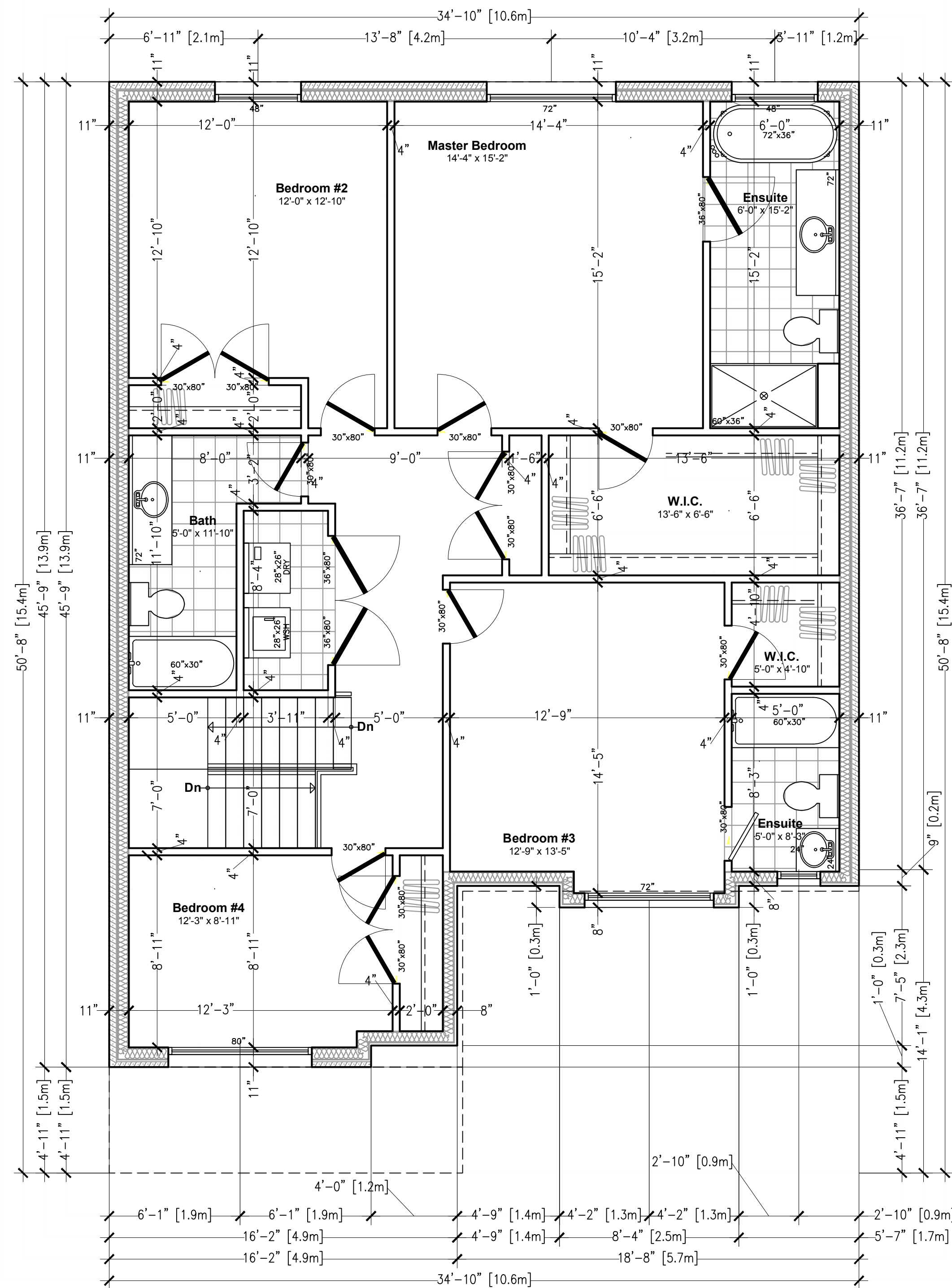
**Notes: Engineering Drawings**

These drawings shall be read in association with the engineering floor joist and specifications as well as the engineering truss layout and specification.

**OBC 9.10.19.3 - Smoke Alarms**

(Renovations Only)

Existing smoke alarms are acceptable, however, if the scope of work involves renovating existing bedrooms, changing room uses from a non bedroom use to proposed bedroom use or an addition which includes a bedroom many requirements of 9.10.19.3 would apply including being interconnected, hardwired and with visual notification. If a smoke alarm is required it will be noted on drawings



Second Floor Plan  
SCALE 1/4" = 1'-0"

**VIRTUAL CREATIONS INC.**  
 PROJECT: Stonehaven Plan 1b, Burlington Ontario  
 PROJECT No: 2020-568  
 (905) 481 1153 BCIN No. **28844**  
 Client: Dawn Victoria Homes  
 Classification: **28844**  
 Original Signature: **WWW.VCINC.CA**  
 ERIC CANTON BCIN#25155  
 ISSUED: 04/28/2021